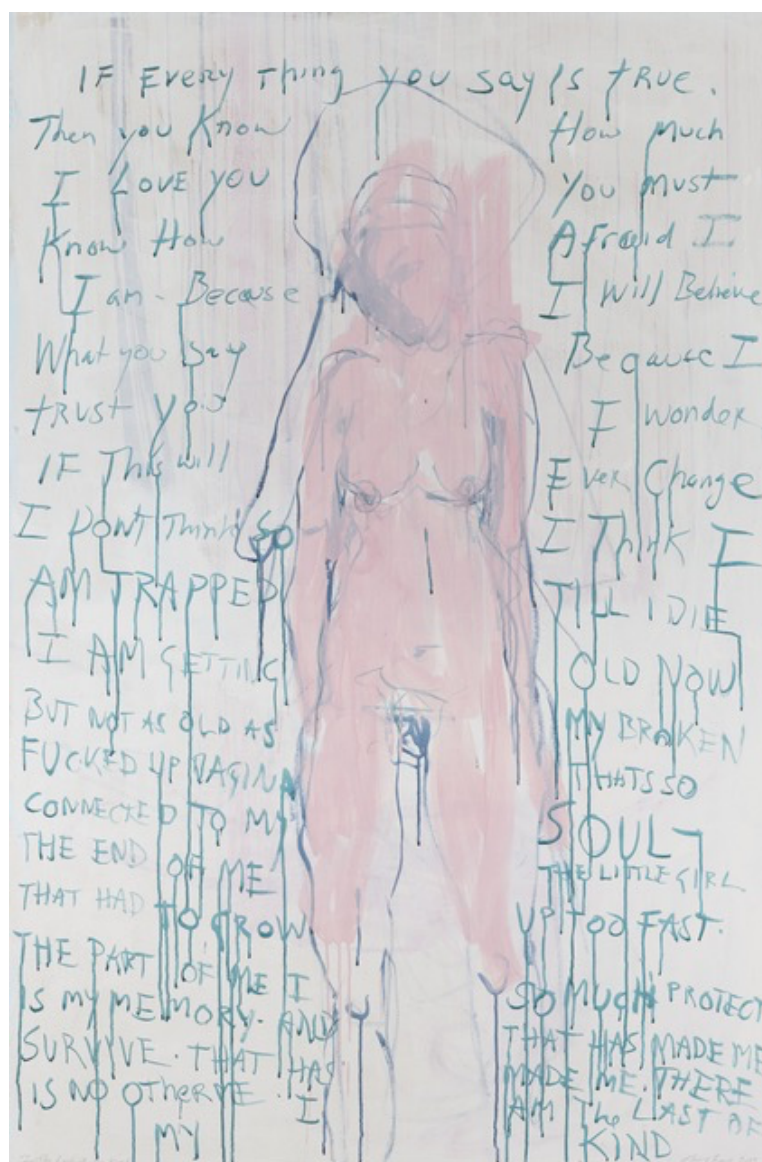


TRACEY EMIN. *A SECOND LIFE*

FEBRUARY 27–AUGUST 31, 2026

Tate Modern, London, UK

PRESS IMAGES



Tracey Emin, *I am The Last of my Kind*, 2019

© Tracey Emin. All rights reserved, DACS 2026

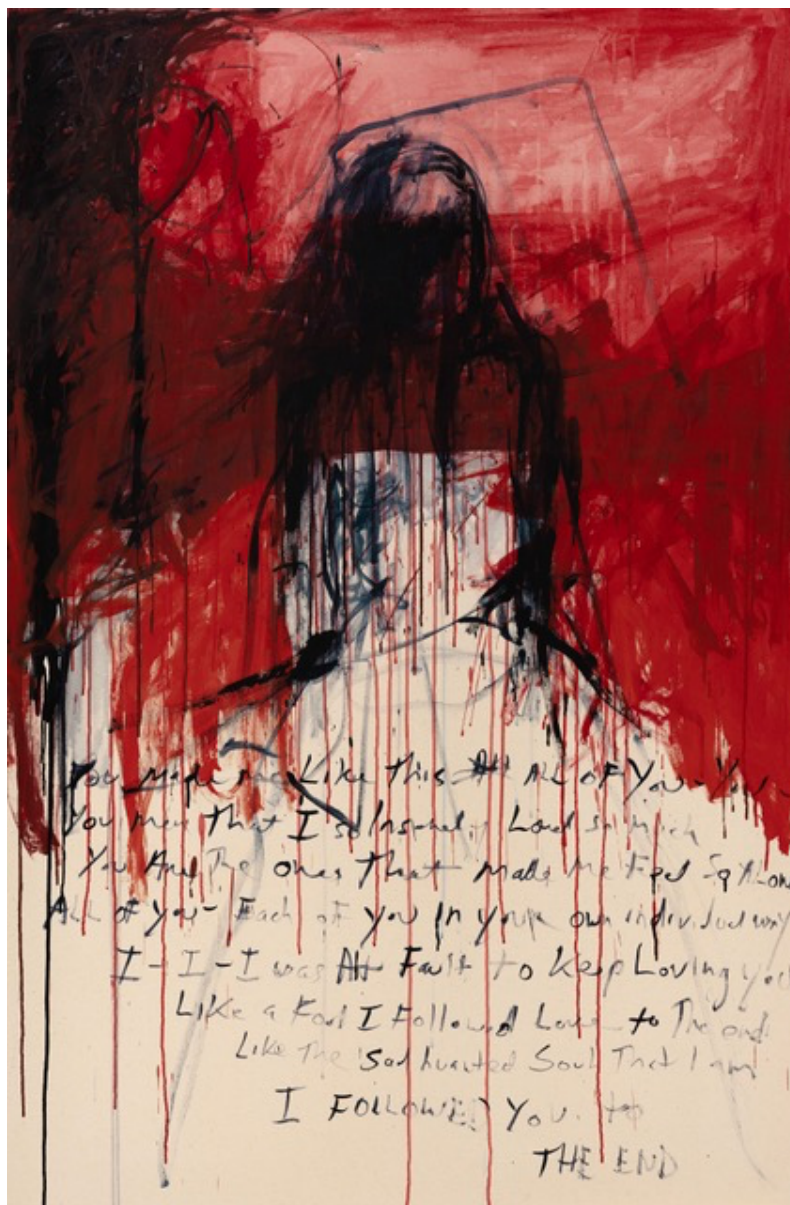
TRACEY EMIN. *A SECOND LIFE*

FEBRUARY 27–AUGUST 31, 2026

Tate Modern, London, UK



PRESS IMAGES



Tracey Emin, *I followed you to the end*, 2024

Yale Centre for British Art.

© Tracey Emin. All rights reserved, DACS 2026



TRACEY EMIN.
A SECOND LIFE

FEBRUARY 27–AUGUST 31, 2026

Tate Modern, London, UK



PRESS IMAGES



Tracey Emin, *I never asked to Fall in Love – You made me Feel like this*, 2018

© Tracey Emin. All rights reserved, DACS 2026

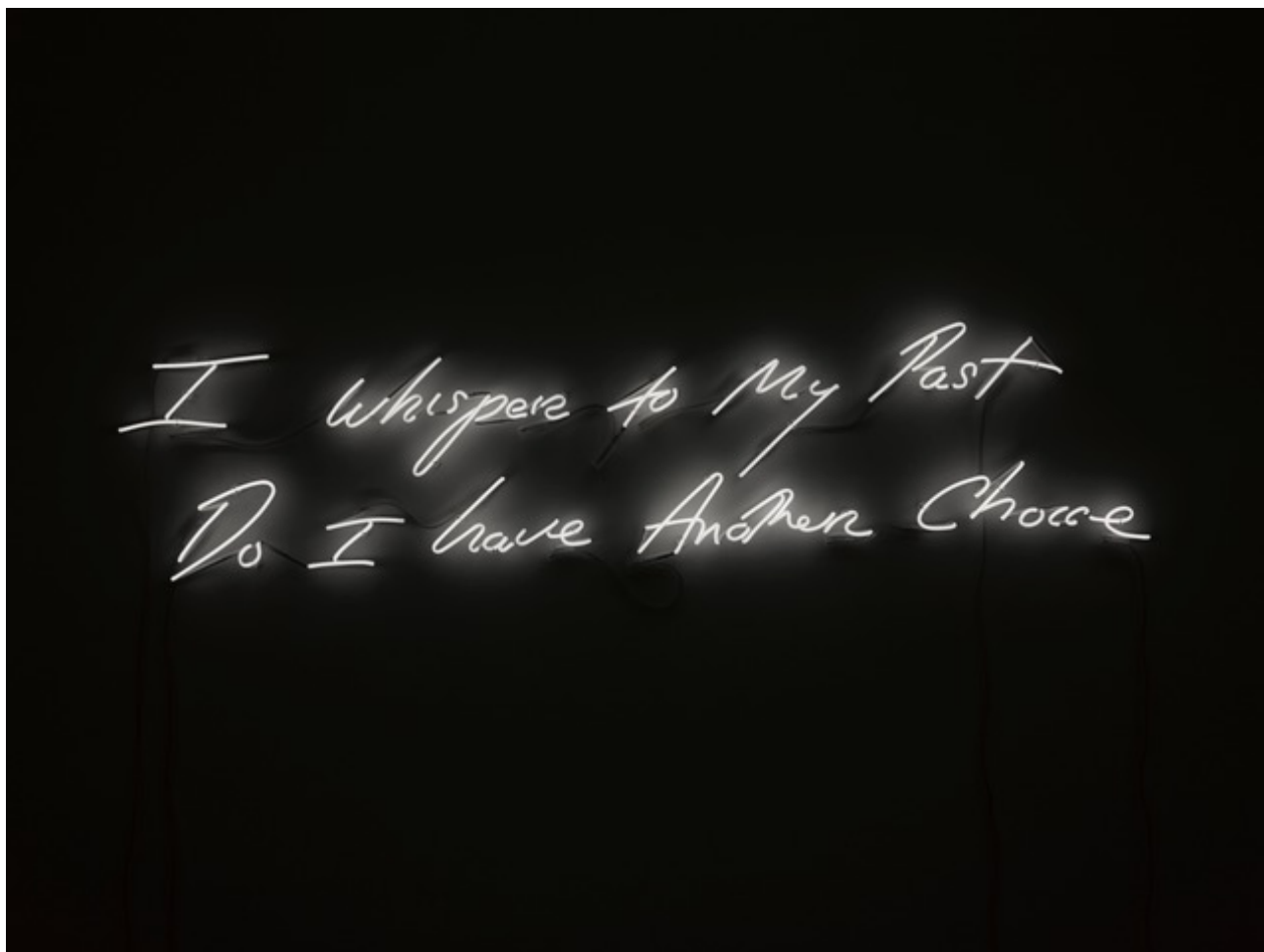
TRACEY EMIN.
A SECOND LIFE

FEBRUARY 27–AUGUST 31, 2026

Tate Modern, London, UK



PRESS IMAGES



Tracey Emin, *I whisper to My Past Do I have Another Choice*, 2010

© Tracey Emin. All rights reserved, DACS 2026

TRACEY EMIN. *A SECOND LIFE*

FEBRUARY 27–AUGUST 31, 2026

Tate Modern, London, UK

PRESS IMAGES



Tracey Emin, *Mad Tracey from Margate. Everyone's been there, 1997*

© Tracey Emin. All rights reserved, DACS 2026

TRACEY EMIN.
A SECOND LIFE

FEBRUARY 27–AUGUST 31, 2026

Tate Modern, London, UK



PRESS IMAGES



Tracey Emin, *My Bed*, 1998

© Tracey Emin. All rights reserved, DACS 2026. Photo credit: Courtesy The Saatchi Gallery, London / Photograph by Prudence Cuming Associates Ltd

TRACEY EMIN.
A SECOND LIFE

FEBRUARY 27–AUGUST 31, 2026

Tate Modern, London, UK



PRESS IMAGES



Tracey Emin, *The End of Love*, 2024

Tate © Tracey Emin. All rights reserved, DACS 2026

TRACEY EMIN.
A SECOND LIFE

FEBRUARY 27–AUGUST 31, 2026

Tate Modern, London, UK



PRESS IMAGES



Tracey Emin, *Why I Never Became a Dancer*, 1995

© Tracey Emin. All rights reserved, DACS 2026

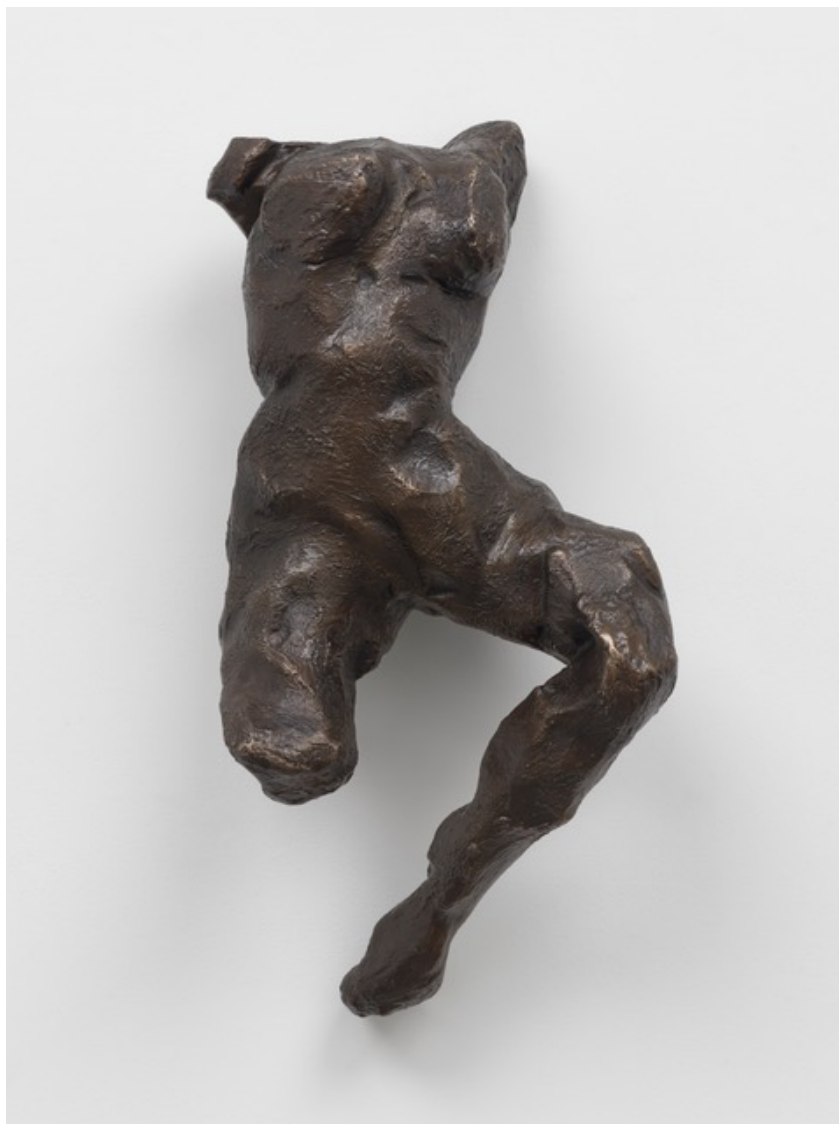
TRACEY EMIN.
A SECOND LIFE

FEBRUARY 27–AUGUST 31, 2026

Tate Modern, London, UK



PRESS IMAGES



Tracey Emin, *Ascension*, 2024

© Tracey Emin. All rights reserved, DACS 2026

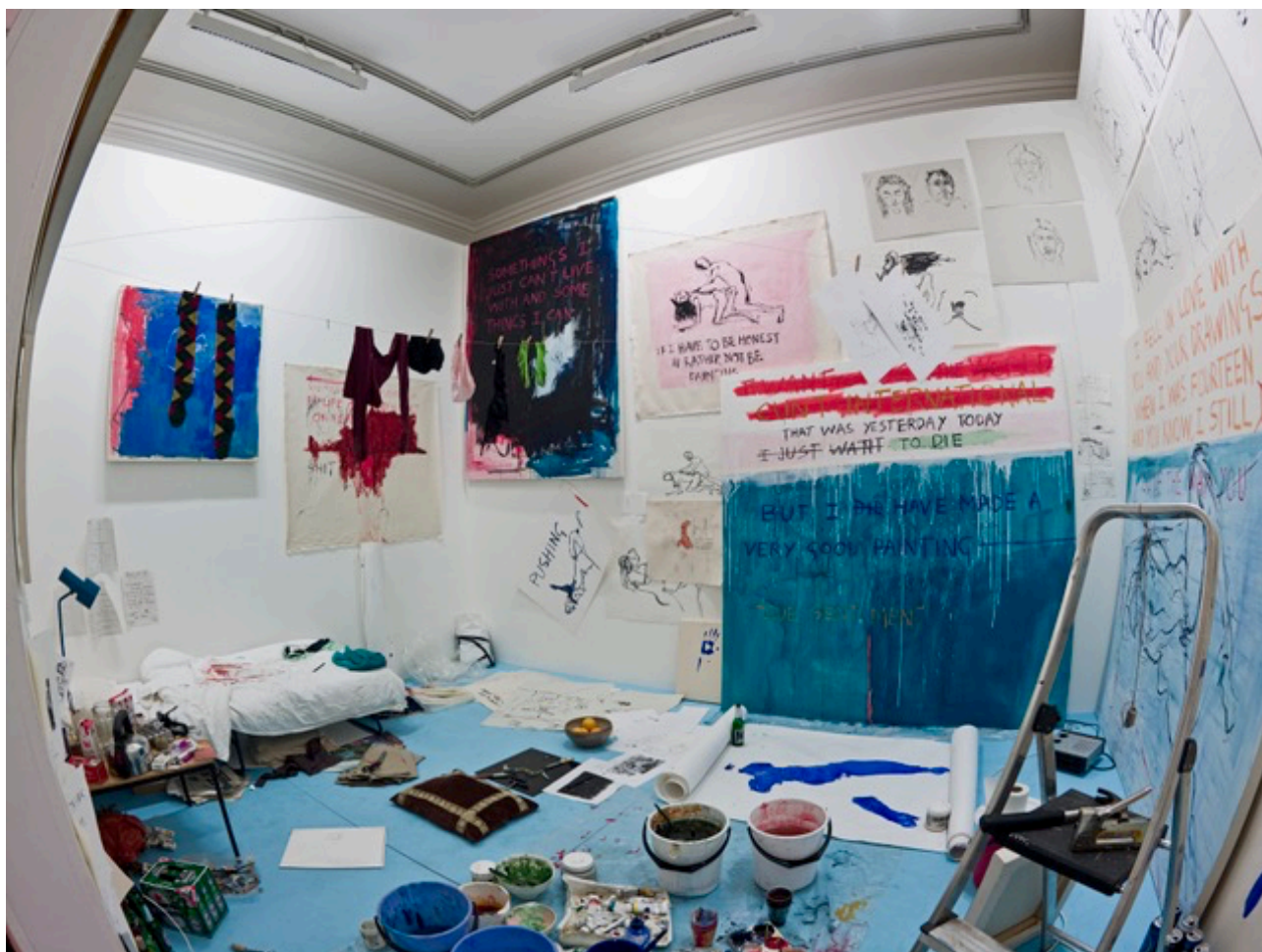
TRACEY EMIN. *A SECOND LIFE*

FEBRUARY 27–AUGUST 31, 2026

Tate Modern, London, UK



PRESS IMAGES



Tracey Emin, *Exorcism of the last painting I ever made*, 1996

© Tracey Emin. All rights reserved, DACS 2026

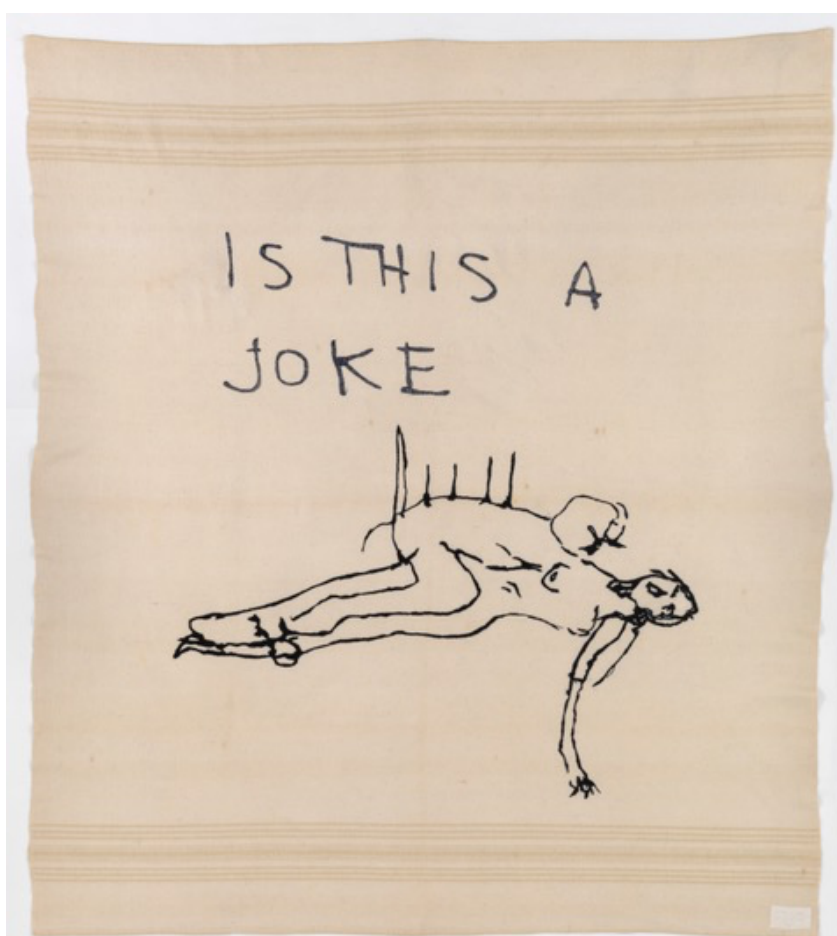
TRACEY EMIN.
A SECOND LIFE

FEBRUARY 27–AUGUST 31, 2026

Tate Modern, London, UK



PRESS IMAGES



Tracey Emin, *Is This a Joke*, 2009

© Tracey Emin. All rights reserved, DACS 2026

TRACEY EMIN.

A SECOND LIFE

FEBRUARY 27–AUGUST 31, 2026

Tate Modern, London, UK



PRESS IMAGES

Terms of Loan

These images are on loan to you, and are accepted by you under the following terms and conditions:

- That the reproductions are accompanied by the caption and credit line;
- That the reproductions are not cropped, overprinted, tinted or subject to any form of derogatory treatment without the prior approval of the copyright owner;
- That the images are only reproduced to illustrate an article or feature directly reviewing or reporting on Tracey Emin at Tate Modern 26 February – 30 August 2026 (section 30 (i) and (ii) of the Copyright, Designs and Patents Act 1988);
- That for online use the images are reproduced at 72 dpi with a maximum measurement of 650x650 pixels or 25x25cm;
- That any reproductions are not used for marketing or advertising purposes.
- That the images are not held on any digital database or retrieval system after usage.
- Press use is considered to be moderate use of images to report a current event or to illustrate a review or criticism of the work, as defined by the Copyright, Designs and Patents Act 1988 Chapter 48 Section 30 Subsections (1) - (3). Reproductions which comply with the above do not need to be licensed.
- Reproductions for all non-press uses or for press uses where the above criteria do not apply (e.g. covers and feature articles) must be licensed before publication. Further information can be obtained at www.dacs.org.uk or by contacting DACS licensing on +44 207 336 8811. Due to UK copyright law only applying to UK publications, any articles or press uses which are published outside of the UK and include reproductions of these images will need to have sought authorisation with the relevant copyright society of that country.
- The use of images for front covers may attract a fee and will require the prior authorisation of the owner and copyright holder of the work. Please contact Tate Press Office for such use: Call 020 7887 8730 or email pressoffice@tate.org.uk

Please request HD images at info@showonshow.com

